



*Up-to-date Questions and Answers from authentic resources to improve knowledge and pass the exam at very first attempt. ----- Guaranteed.*



350-601 Dumps  
350-601 Braindumps  
350-601 Real Questions  
350-601 Practice Test  
350-601 Actual Questions



**Cisco**

# 350-601

*Implementing Cisco Data Center Core Technologies (DCCOR)*



<https://killexams.com/pass4sure/exam-detail/350-601>

**Question: 368**

A small remote office is set to connect to the regional hub site via NSSA ASBR.

Which type of LSA is sent to the remote office OSPF area?

- A. type 7 LSA
- B. type 1 LSA
- C. type 5 LSA
- D. type 3 LSA

**Answer: A**

**Question: 369**

Which mroute state is created when Bidirectional PIM is deployed at a site?

- A. \*G
- B. MVPN Type-6
- C. MVPN Type-7
- E. G

**Answer: A**

**Question: 370**

Refer to the exhibit.

```

Nexus# show vpc peer-keepalive | i Keepalive
--Keepalive interval : 1000 msec
--Keepalive timeout : 5 seconds
--Keepalive hold timeout : 3 seconds
--Keepalive vrf : management
--Keepalive udp port : 3200
--Keepalive tos : 192

Nexus# ethanalyzer local interface mgmt limit-captured-frames 1000

Capturing on mgmt0
2019-06-15 12:01:51.242597 192.168.254.11 -> 192.168.254.3 ICMP Echo (ping) request
2019-06-15 12:01:51.242860 192.168.254.3 -> 192.168.254.11 ICMP Echo (ping) reply
2019-06-15 11:50:15.975474 192.168.254.1 -> 192.168.254.3 TCP 47540 > bootps [SYN] Seq=0 Win=1024 Len=0 MSS=1460
2019-06-15 11:50:15.975547 192.168.254.3 -> 192.168.254.1 TCP 29 > 47540 [RST, A CK] Seq=1 Ack=1 Win=0 Len=0
2019-06-15 11:50:15.975564 192.168.254.1 -> 192.168.254.3 TCP 47540 > 44 [SYN] Seq=0 Win=1024 Len=0 MSS=1460
2019-06-15 11:50:15.975924 192.168.254.1 -> 192.168.254.3 TCP 47540 > discard [SYN] Seq=0 Win=1024 Len=0 MSS=1460
2019-06-15 11:50:15.976027 192.168.254.1 -> 192.168.254.3 TCP 47540 > 97 [SYN] Seq=0 Win=1024 Len=0 MSS=1460
2019-06-15 11:50:15.976381 192.168.254.1 -> 192.168.254.3 TCP 47540 > 35 [SYN] Seq=0 Win=1024 Len=0 MSS=1460
2019-06-15 11:50:16.661845 192.168.254.3 -> 192.168.254.4 UDP Source port: 3200 Destination port: 3200
2019-06-15 11:50:16.761147 00:8e:73:a2:41:13 -> 01:80:c2:00:00:00 STP Conf. Root = 8192/10/ee:e1:a9:df:6c:80 Cost = 22 Port = 0x8013
2019-06-15 11:50:16.853248 192.168.254.4 -> 192.168.254.3 UDP Source port: 3200 Destination port: 3200
2019-06-15 11:50:17.326253 192.168.254.1 -> 192.168.254.3 SSH Encrypted request packet len=52
2019-06-15 11:50:17.327313 192.168.254.3 -> 192.168.254.1 SSH Encrypted response packet len=1348
2019-06-15 11:50:17.372246 192.168.254.4 -> 239.255.70.83 UDP Source port: 7546 Destination port: 7546
2019-06-15 11:50:17.552215 192.168.254.1 -> 192.168.254.3 TCP 14139 > ssh [ACK] Seq=365 Ack=11277 Win=63546 Len=0
2019-06-15 11:50:17.661764 192.168.254.3 -> 192.168.254.4 UDP Source port: 3200 Destination port: 3200
2019-06-15 11:50:17.653242 192.168.254.4 -> 192.168.254.3 UDP Source port: 3200 Destination port: 3200
2019-06-15 11:50:17.872637 8c:60:4faa:c2:e1 -> 01:80:c7:00:00:0e LLDP Chassis : d = 8c:60:41:aa:c2:e1 Port Id = mgmt0 TTL = 120
2019-06-15 11:50:08.173056 192.168.256.3 -> 192.168.254.2 NTP NTP client
2019-06-15 11:50:08.173256 192.168.256.2 -> 192.168.254.3 NTP NTP server

```

A flapping link issue has been reported on the vPC keepalive link. A packet capture has been activated on the Cisco Nexus switch.

What is the destination IP address of the vPC keepalive packets that are sent by the switch?

- A. 192.168.254.4
- B. 192.168.254.1
- C. 192.168.254.2
- D. 239.255.70.83

**Answer:** A

**Question:** 371

Which two settings must be configured before enabling a Cisco UCS Manager domain for Cisco Intersight connectivity? (Choose two.)

- A. SMTP servers
- B. SMTP reply-to address
- C. NTP servers
- D. syslog redirection
- E. DNS servers

**Answer:** CE

**Question:** 372

Which two settings must be configured before enabling a Cisco UCS Manager domain for Cisco Intersight connectivity? (Choose two.)

- A. SMTP servers
- B. SMTP reply-to address
- C. NTP servers
- D. syslog redirection
- E. DNS servers

**Answer:** CE

**Question:** 373

Which two settings must be configured before enabling a Cisco UCS Manager domain for Cisco Intersight connectivity? (Choose two.)

- A. SMTP servers
- B. SMTP reply-to address
- C. NTP servers
- D. syslog redirection
- E. DNS servers

**Answer:** CE

**Question:** 374

What are two capabilities of the Cisco Network Assurance Engine? (Choose two.)

- A. It validates that devices comply with network security policies.
- B. It predicts the impact of changes to the network.
- C. It predicts the network load on a data center.
- D. It ensures that network performance meets an SLA.
- E. It verifies the speed of network packet flows by using telemetry.

**Answer:** AB

**Question:** 375

Which two settings must be configured before enabling a Cisco UCS Manager domain for Cisco Intersight connectivity? (Choose two.)

- A. SMTP servers
- B. SMTP reply-to address
- C. NTP servers
- D. syslog redirection
- E. DNS servers

**Answer:** CE

**Question:** 376

Refer to the exhibit.

```
N7K-1
spanning-tree vlan 1-10 priority 8192

vpc domain 100
  role priority 100
  peer-keepalive destination 10.1.1.2 source 10.1.1.1
vrf default
  delay restore 60
  peer-switch
  auto-recovery
  ip arp synchronize

N7K-2
spanning-tree vlan 1-10 priority 8192

vpc domain 100
  role priority 200
  peer-keepalive destination 10.1.1.1 source 10.1.1.2
vrf default
  delay restore 60
  peer-switch
  auto-recovery
  ip arp synchronize
```

The STP priority of N7K-1 and N7K-2 are the lowest in the network.

Which statement describes STP on the vPC?

- A. N7K-1 and N7K-2 appear as a single STP root.
- B. N7K-1 appears as the STP root.
- C. N7K-1 preempts N7K-2 as the STP root.
- D. N7K-2 appears as the STP root.

**Answer:** A

**Question:** 377

Which virtual MAC address is the default for HSRP version 2 group 10?

- A. 0000.5E00.0110
- B. 0000.0C9
- C. F00A

D. 3716.1350.1C0A  
E. 0000.0C9  
F. F010

**Answer:** B

**Question:** 378

Which adjacency server configuration makes two OTV edge devices located in the same site bring up the dual-site adjacency?

A)

Nexus-1:

```
interface Ethernet1/2
ip address 20.1.1.1/24
```

```
interface Overlay200
otv use-adjacency-server 20.1.1.2 unicast-only
otv join-interface Ethernet1/2
```

Nexus-2:

```
interface Ethernet1/2
ip address 20.1.1.2/24
```

```
interface Overlay200
otv use-adjacency-server 20.1.1.1 unicast-only
otv join-interface Ethernet1/2
```

B)

Nexus-1:

```
interface Ethernet1/2
ip address 20.1.1.1/24
```

```
interface Overlay200
otv adjacency-server unicast-only
otv join-interface Ethernet1/2
```

Nexus-2:

```
interface Ethernet1/2
ip address 20.1.1.2/24
```

```
interface Overlay200
otv join-interface Ethernet1/2
otv adjacency-server unicast-only
otv use-adjacency-server 20.1.1.1 unicast-only
```

C)

Nexus-1:

```
interface Ethernet1/2
ip address 20.1.1.1/24
```

```
interface Overlay200
otv adjacency-server unicast-only
otv join-interface Ethernet1/2
```

Nexus-2:

```
interface Ethernet1/2
ip address 20.1.1.2/24
```

```
intevrface Overlay200
otv adjacency-server unicast-only
otv join-interface Ethernet1/2
```

D)

Nexus-1:

```
interface Ethernet1/2
ip address 20.1.1.1/24
```

```
interface Overlay200
otv use-adjacency-server 20.1.1.1 unicast-only
otv adjacency-server unicast-only
otv join-interface Ethernet1/2
```

Nexus-2:

```
interface Ethernet1/2
ip address 20.1.1.2/24
```

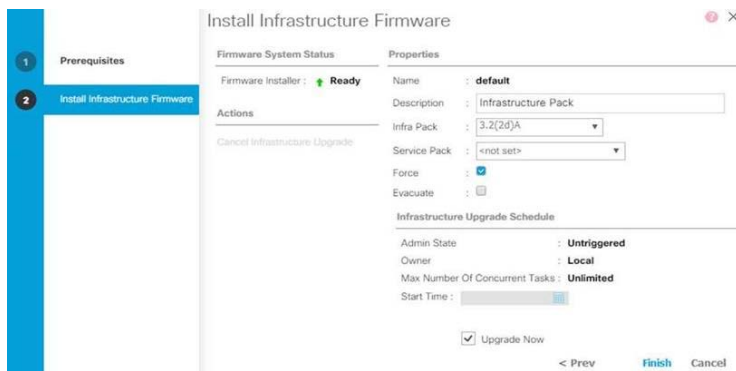
```
interface Overlay200
otv use-adjacency-server 20.1.1.2 unicast-only
otv adjacency-server unicast-only
otv join-interface Ethernet1/2
```

- A. Option A
- B. Option B
- C. Option C
- D. Option D

**Answer:** B

**Question:** 379

Refer to the exhibit.



Which two Cisco UCS components are upgraded as a result of the configuration? (Choose two.)

- A. IOMs
- B. Cisco UCS Manager
- C. board controller
- D. adapters
- E. BIOS

Answer: AC

Question: 380

Refer to the exhibit.

```
OTV-Site1# show otv
OTV Overlay Information
Site Identifier 0000.0000.0111
Overlay interface Overlay200
VPN name: Overlay200
VPN state: UP
Extended vlans: 178 2500-2563 (Total:65)
Join interface(s): Eth1/2 (20.1.1.1)
Site vlan: 1999 (up)
AED-Capable: Yes
Capability: Unicast-Only
Is Adjacency Server: Yes
Adjacency Server(s): 20.1.1.1/20.2.1.1
```

A network engineer is setting up a multihomed OTV network. The first site has been set up with a primary and secondary adjacency server.

Which configuration must be added on the remote OTV AEDs site?

A)

```
interface Overlay200
 otf join-interface Ethernet1/2
 otf extend-vlan 178. 2500-2563
 otf use-adjacency-server 20.1.1.1 unicast-only
```

B)

```
interface Overlay200
 otf join-interface Ethernet1/2
 otf extend-vlan 178. 2500-2563
```

C)

```
interface Overlay200
otv join-interface Ethernet1/2
otv extend-vlan 178. 2500-2563
otv use-adjacency-server 20.1.1.1 20.2.1.1 unicast-only
```

D)

```
interface Overlay200
otv join-interface Ethernet1/2
otv extend-vlan 178. 2500-2563
otv adjacency-server unicast-only
```

- A. Option A
- B. Option B
- C. Option C
- D. Option D

**Answer:** C

**Question:** 381

An engineer is configuring a backup operation on the existing Cisco UCS environment using a logical configuration.

Which configuration is expected to be saved by using this backup type?

- A. systems
- B. roles
- C. servers
- D. service profiles

**Answer:** D

**Question:** 382

An engineer is asked to use SaaS to manage Cisco computing.

Which two items are needed to accomplish the task? (Choose two.)

- A. Intersight
- B. UCS Central
- C. Device/Claim ID
- D. Node name/Serial Number
- E. UCS Manager

**Answer:** AE

**Question:** 383

Which two settings must be configured before enabling a Cisco UCS Manager domain for Cisco Intersight connectivity? (Choose two.)

- A. SMTP servers
- B. SMTP reply-to address
- C. NTP servers
- D. syslog redirection
- E. DNS servers

**Answer:** CE

**Question:** 384

Which two settings must be configured before enabling a Cisco UCS Manager domain for Cisco Intersight connectivity? (Choose two.)

- A. SMTP servers
- B. SMTP reply-to address
- C. NTP servers
- D. syslog redirection
- E. DNS servers

**Answer:** CE



Question: 385

What characteristic of IP addressing creates a hierarchical network?

- A. All hosts on all networks must have unique host numbers.
- B. IP addresses identify a host and the network on which it resides.
- C. Clients are assigned 32-bit addresses and servers 64-bit addresses.
- D. Router, switch and host addresses are drawn from unique address classes.

Answer: B



# SAMPLE QUESTIONS

*These questions are for demo purpose only. **Full version** is up to date and contains actual questions and answers.*

*Killexams.com is an online platform that offers a wide range of services related to certification exam preparation. The platform provides actual questions, exam dumps, and practice tests to help individuals prepare for various certification exams with confidence. Here are some key features and services offered by Killexams.com:*

**Actual Exam Questions:** *Killexams.com provides actual exam questions that are experienced in test centers. These questions are updated regularly to ensure they are up-to-date and relevant to the latest exam syllabus. By studying these actual questions, candidates can familiarize themselves with the content and format of the real exam.*

**Exam Dumps:** *Killexams.com offers exam dumps in PDF format. These dumps contain a comprehensive collection of questions and answers that cover the exam topics. By using these dumps, candidates can enhance their knowledge and improve their chances of success in the certification exam.*

**Practice Tests:** *Killexams.com provides practice tests through their desktop VCE exam simulator and online test engine. These practice tests simulate the real exam environment and help candidates assess their readiness for the actual exam. The practice tests cover a wide range of questions and enable candidates to identify their strengths and weaknesses.*

**Guaranteed Success:** *Killexams.com offers a success guarantee with their exam dumps. They claim that by using their materials, candidates will pass their exams on the first attempt or they will refund the purchase price. This guarantee provides assurance and confidence to individuals preparing for certification exams.*

**Updated Content:** *Killexams.com regularly updates its question bank and exam dumps to ensure that they are current and reflect the latest changes in the exam syllabus. This helps candidates stay up-to-date with the exam content and increases their chances of success.*

**Technical Support:** *Killexams.com provides free 24x7 technical support to assist candidates with any queries or issues they may encounter while using their services. Their certified experts are available to provide guidance and help candidates throughout their exam preparation journey.*

For More exams visit <https://killexams.com/vendors-exam-list>  
Kill your exam at First Attempt....Guaranteed!